
**FIRST
 LINK**

N.L.A. CALENDAR

- **FEBRUARY, 1989****
- 18 NLA:WASHINGTON SEATTLE
Coronation Honor Guard
Court of Seattle
 - 19 NLA:BC VANCOUVER
Board Retreat 2PM
- **MARCH, 1989****
- 4 NLA:BC VANCOUVER
Workshop:Role Playing GLCC
7 PM
 - 5 NLA:WASHINGTON SEATTLE
Board Meeting VIK's 5PM
 - 10 Deadline FIRST LINK III:3
 - 10 NLA:BC VANCOUVER
Bar Night Ms.T's
 - 12 NLA:BC VANCOUVER
Board Meeting 7 PM VGLC
 - 18 NLA:WASHINGTON SEATTLE
IMSL Regional Sendoff
 - 31 NLA:WASHINGTON SEATTLE
Kinky Couples Dinner/Party
- **APRIL, 1989****
- 2 NLA:WASHINGTON SEATTLE
Rocky Horror Pic Show Party
 - 2 NLA:WASHINGTON SEATTLE
Board Meeting 5PM
 - 9 NLA:BC VANCOUVER
Board Meeting 7 PM VGLC
 - 10 Deadline FIRST LINK III:4
 - 14 NLA:BC VANCOUVER
Bar Night Ms.T's
- *****
28-30 NLA:WASHINGTON SEATTLE
*** MAY DAY III ***

- **MAY, 1989****
- 7 NLA:WASHINGTON SEATTLE
Board Meeting 5PM
 - 10 Deadline FIRST LINK III:5
 - 12 NLA:BC VANCOUVER
Bar Night Ms.T's
 - 14 NLA:BC VANCOUVER
Board Meeting 7 PM VGLC
 - 20 NLA:WASHINGTON SEATTLE
IML Regional Sendoff



Board in Brief

The Meeting of NLA:Seattle was at Rick's on Feb.5. Minutes of Jan. 8 were approved.

The President advocated NLA's establishing a Hospitality Suite at IMSL, with the objective of providing high visibility for the NLA among the many people there. It was suggested that Seattle approach the other NLA chapters, to see if costs might be shared. Vik will get more solid cost estimates. This might be a splendid chance for our chapters to work together with the NAC on a cooperative endeavour.

The Treasurer reported a reasonable balance in the NLA:Seattle account. Black Heart's, with only 8 Seattle members attending, produced only a \$5.74 profit, after about \$260 expenses were deducted. Serious efforts are being made by the Treasurer to clean up the past fiscal rubble and organize for future control and smoothness.

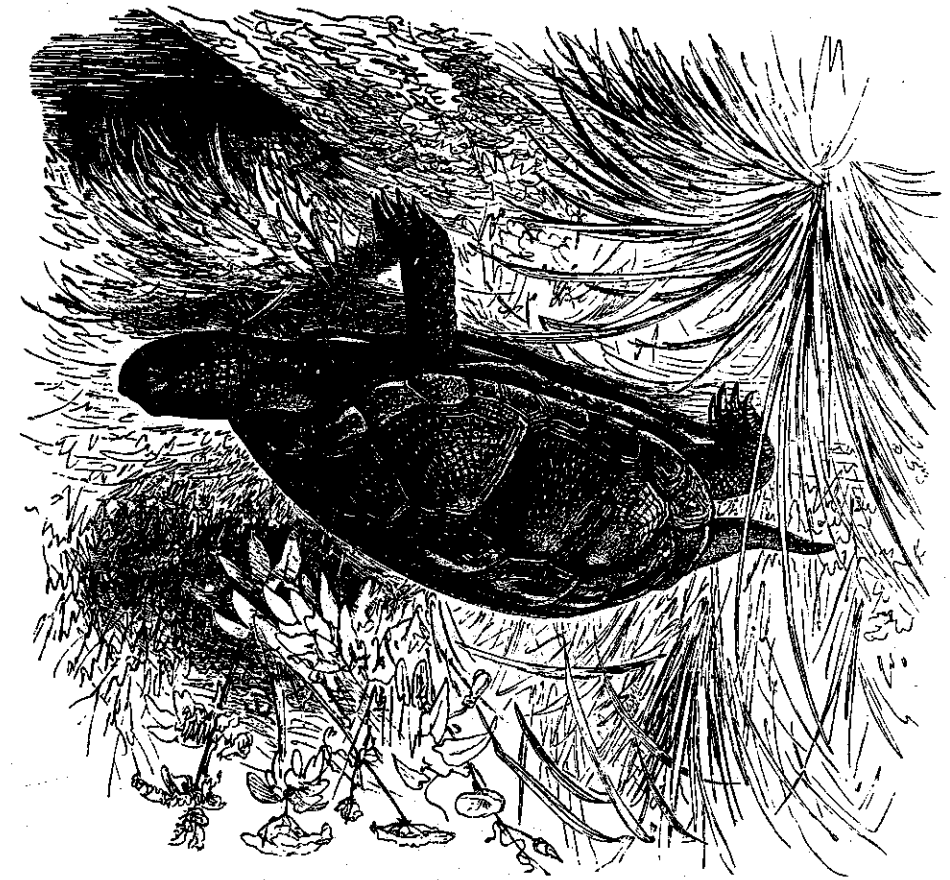
The Program Chair mentioned the fun had at the Black Hearts event, and reminded the Board of the April 2 Rocky Horror Picture Show Party. He also announced the request for NLA:Seattle's participation as an honor guard at the Seattle Court Coronation. The Board voted to finance half the cost of admission for ten members to that event, \$112.50. Participating members will pay the balance. A media hype is planned before the coronation, with photos sent to the press, and photos should be taken at the event.

The Membership Chair announced a new NLA chapter in formation, NLA:San Diego, with 18 members. The paperwork is in progress.

The name change, from NLA:Seattle to NLA:WASHINGTON, announced in last month's *FIRST LINK* is provisional. It will be formally proposed as a by-law amendment, after we receive member input, and will be on the agenda of proposed by-law changes submitted to the membership at the Spring General NLA:Seattle meeting.

The Board voted to officially sponsor Cherie, current MS. NLA, in the forthcoming IMSL Competition.

cont. p.2



H. L. A.
 P.O. BOX 17463
 SEATTLE, WA.
 98107-0463

ADDRESS CORRECTION REQUESTED



89.03- M/ 1020/ -
 R. Wooden & M. Sauer
 372 ALOHA, #10
 SEATTLE, WA 98109

Dear Friends,
Recently the interim steering committee of Safe, Sane, Consensual Adults met in Seattle to finalize a plan to organize a national group. In the last few months we've received your ideas through the mail and at some open meetings. These ideas have been crucial in the creation of a plan to meet your needs.

This mailing outlines the system we have to offer. It is a framework by which a national group may begin to function. We view this framework as a beginning, that over the next few years can adapt to changing needs. The structure we have developed is shown on the top of the next page.

GENERAL MEMBERSHIP There are two types of membership: individual and organization. Business owners are encouraged to become individual members. Major decisions of the national group will be ratified by the entire membership.

STEERING COMMITTEES In this structure, the membership of the national group votes for two steering committees. One is selected by individuals. One is selected by organizations. Each steering committee will have 12 members.

THE BOARD The Board itself is created by the steering committees. The Board has twelve members; four are from the individual steering committee, and eight are from the organization steering committee. The Board would thus be appointed by the steering committees. Board members would be serving on a rotating basis so that all steering committee members would serve on the Board at some time during their tenure. The Board functions as mediator and sets the tone for the direction of the national group. The Board will have a president, secretary, and treasurer, with gender parity strongly encouraged.

PROPOSED STRUCTURE OF THE SSCA See Diagram on Facing Page:

STANDING COMMITTEES There will be six joint standing committees, and more as needed. These committees are made up of volunteers (nonelected). It will be required that board members also serve on the standing committees; but as members, not necessarily as leaders. The exception is that the treasurer from the Board must chair the Finance group. The six joint standing committees will have members from both steering committees. Other committees (ad hoc) will, perhaps, have only individual issues or organizational issues as their focus.

NONPROFIT STATUS The national group will have nonprofit status (501 C-4,7), towards which donations are not tax deductible. Education and political action can take place from this fund. It will also have a fund that is nonprofit and tax deductible (501-C-3).

MERGER WITH NLA The National Leather Association (NLA) is a group of varied membership that seeks to develop a strong community for adults interested in leather, SM, and other sexualities. It promotes safe, sane, and consensual sexual expression. Its recently proposed statement of purpose is very similar to that of the SSCA.

At its October membership meeting, the National Leather Association included in its structure a national advisory committee (NAC) to evolve a national structure. This committee includes a representative from each member organization (business, club, organization), several at-large NLA members, some of the local Seattle board, and all of the current members of the SSCA's interim steering committee. The NAC is to work on developing (by May Day) bylaws for a national structure. Its Co-Chairs are Judy Tallwing-McCarthy and Jim Richards.

The SSCA presented the attached national structure to those attending the NLA's October meeting. As separate entities, NLA and SSCA would heavily duplicate each other's efforts, thereby dividing personnel, expertise, finances, and promoting member burnout.

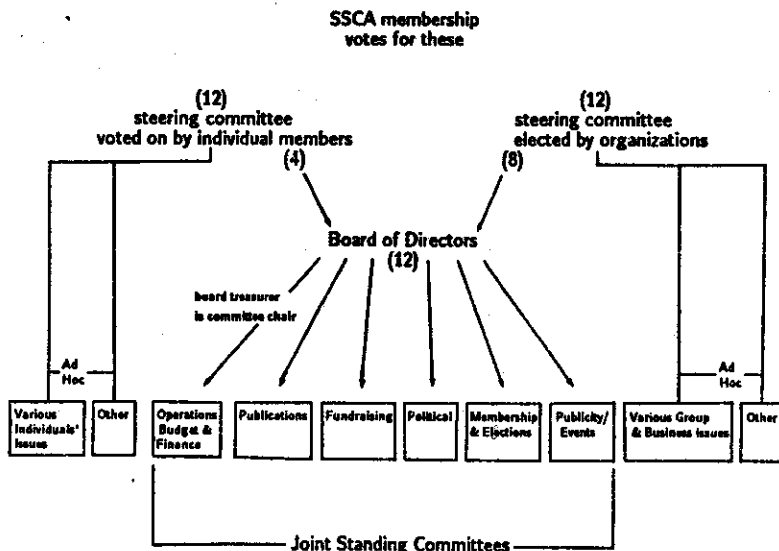
Because NLA-Seattle already has a strong local structure, it is at this time seeking a means to allow expansion as a national group. We suggest that merger between SSCA and the "national" NLA has much to offer the constituents of both groups and could benefit them nationally.

We have proceeded on a merger as the most reasonable course of action, thus combining SSCA with a well-defined, primarily local group, NLA, to form a national organization. Our course is to work with NLA on achieving a national structure. At that time our mailing list will be merged with the mailing list of the NLA, to continue to inform you about the evolution of the national group. Please write us if you do not wish your address to be merged.

Together our community can become nationally strong. Thank you for your continuing support.

Sincerely, The Interim Steering Committee
SSCA: Stacy L. Dennen,
Jim Richards, John Ferrari,

Proposed Structure of the SSCA



Board In Brief

from p.1

Some **MAY DAY** plans were discussed. **MAY DAY** will open with a Meet & Greet on April 28. Prejudging for the competition will be from 3 to 5 on April 29. Rooms for Hospitality and some meetings are being held at the Tropics Hotel, the weekend's headquarters hotel. Play Space is arranged for two nights' dungeons. The contest will be at the Balcony Bar (formerly the West End of the upstairs at the Boxing Club) on Saturday evening. The next **MAY DAY** planning meeting will be on Feb. 14 at Jan's at 7:30 PM. Initial budgets were discussed, subject to later discussion, refinement, and approval. Contestants must either belong to the NLA (in which case there is no entry fee) or must pay a \$25 fee to compete (and become NLA members).

The March 31 Couples' Dinner and Event was discussed. The surroundings (toured that day by a group of the organizers of the event and several Board members) are comfortable. The Dungeon Guild will supply dungeon supervision. With only 18 couples attending, the event could break even, though more attendees than that are certainly expected.

It was decided to hold the Spring NLA: Seattle meeting during the course of the **MAY DAY** weekend, probably on April 30.

The next Board Meeting is March 5 at President Vik Stump's, at 5 PM.

NLA ADDRESSES

- NATIONAL LEATHER ASSOCIATION. POB 17463, Seattle, WA 98107
- NATIONAL LEATHER ASSOCIATION: WASHINGTON. POB 20674, Seattle, WA 98102
- NATIONAL LEATHER ASSOCIATION: BRITISH COLUMBIA. 1170 Bute St., Vancouver, B.C., V6E-1Z6, Canada
- NATIONAL LEATHER ASSOCIATION: PORTLAND. 2544 NW Savier, #E, Portland, OR 97210

THE WASHINGTON STATE CHAPTER OF THE NATIONAL LEATHER ASSOCIATION PRESENTS:

KINKY COUPLES AND LOVERS DINNER AND PARTY

Friday, March 31, 1989, 6 PM to 3 AM.

Event is located in a sprawling, plush mansion on 13 secluded acres with a large private parking lot in Lynnwood, about 15 minutes north of Northgate Mall off of I-5 (Exit #186). Directions will be given on phone.

Gay, lesbian and heterosexual couples are welcome. Threesomes are also welcome.

Member couples (at least one person must belong to NLA): \$35.00 per couple. (Add \$17.50 for additional person). Non-member couples: \$40.00. (Add \$20.00 for additional person).

Reservations are being coordinated by Steve and Joni at 368-8617 and by Bettykay and Beth at 632-5485. **RESERVATIONS ARE REQUIRED.**

Doors open at 6 PM. No one will be admitted after 9:30 PM.



Dinner, served at 8 PM, will be baked chicken, salad, vegetable, rice, dessert, soft drinks and coffee. You may bring wine or beer to accompany your meal.

Clothing is optional. Outrageous outfits are encouraged.

Bring your favorite toys to play with.

Bring a towel and perhaps a robe. There are a large indoor heated pool, 3 hot tubs (2 indoor, 1 outdoor), sauna, clean showers, and dressing areas with cubby space to keep your gear. Bathing areas will not be segregated. Please leave wallets, purses, and other valuables in your car.

Facilities also include a terraced dining room with dance floor, a variety of private rooms and group play areas, a sunken fireplace, a video room, and free non-alcoholic beverages.

An entertaining presentation on safety, etiquette, and personal rights will follow dinner prior to playtime. The policies of the NLA, the play rules of the

Seattle Dungeon Guild and the house rules of Horizon Manor will be explained. These rules include no oral, anal, or genital sex without condoms, gloves, or dams; no drugs or alcohol; and no physical contact without consent. Playtime activities will be supervised by the Seattle Dungeon Guild. Safe, sober and consensual play is required. All attending the event will be required to sign the usual liability release statements.

All interested in SM/BD/Fetish play, whether novice or experienced, are welcome at this event. A special group discussion period aimed especially at couples and lovers relatively new to the scene, is being planned.

The NLA is an educational and support network for all men and women of the Leather/SM/Fetish Community; for more information on the NLA, Contact POB 174763, Seattle, WA, 98107. The Seattle Dungeon Guild is a group oriented to Gay Males; it may be contacted at POB 21911, Seattle, WA, 98111.

CHAPTER FORMATION

Currently, the NLA has Chapters in Vancouver, Seattle, and Portland, and a chapter-in-formation in San Diego. We have many members in other locations throughout the U.S. and Canada, with heavy concentrations in Massachusetts, Ohio, Virginia, Florida, and throughout California. No matter where you live, we hope you will consider that advantages in having a chapter of NLA in your own locale. We will be happy to send you information, if you are seriously thinking of establishing a chapter of NLA. Please inquire at P.O.Box 17463, Seattle, Wa., 98107.

ATTENTION ORGANIZATIONS

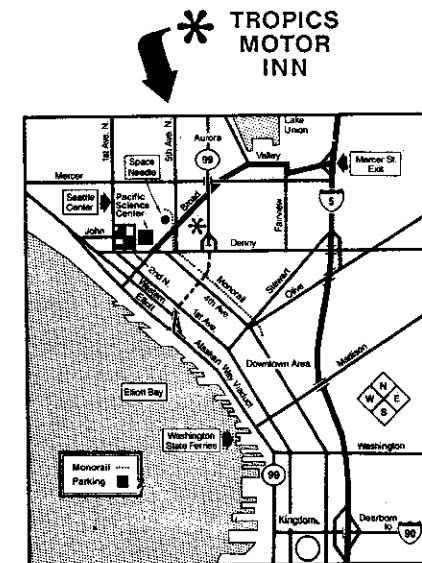
With this issue of **First Link**, which we mail to all U.S. and Canadian Clubs and Organizations, we are including, for your convenience, an affiliate application form. We hope you will consider joining the National Leather Association as an affiliate member. We are the fastest-growing organization of clubs and individuals in North America, with Chapters in four cities and affiliates throughout the country. Businesses may also join the NLA as commercial affiliates.

MEMBERSHIP RENEWALS

Members whose dues are due during March and April, 1989, will be receiving renewal notices with this issue of the **FIRST LINK**. Dues are \$25.00 per year. If you are a chapter member, you should send your renewals to your chapter address, though all renewals received at the National POB will be duly credited. All B.C. members should send renewals (in Canadian funds) to NLA:BC. How do you know when your membership expires? Look on your mailing label; the first numbers indicate your expiration year and month. Memberships are due on the first of that month. Thus, if your number is "89.05", your membership expires on May 1, 1989. If your membership expired in January, 1989, or earlier, this will be your last **FIRST LINK** issue until you renew. If you are not now a member and would like to join, write NLA, POB 17463, Seattle, WA., 98107, and we will send you information.

MAYDAY, 1989

Imagine, if you would, a super hot weekend, in the Spring in Seattle (balmy and lovely), with hospitality areas, work-shops demonstrations, two nights of dungeons, and a super-hot contest, and there you've got the bare bones of **MAYDAY 1989**. Work has been progressing well on this NLA: Washington event and, next month, **FIRST LINK** will be giving you ALL the de-tails. Be sure to plan on coming to Seattle for the last weekend in April!



MAY DAY '89 HEADQUARTERS

Headquarters hotel for **MAY DAY '89** will be the Tropics Motor Inn, 225 Aurora Ave. N., Seattle, WA 98109. Call at 800-255-7932 (U.S.), 800-962-5750 (Wash. State), or 800-426-0167 (Canada) and ask for Betsy for information and reservations.

FIRST LINK: Copyright 1989 by the National Leather Association, P.O.Box 17463, Seattle, WA 98107. George Nelson Editor. All rights reserved. Permission is granted for republication of brief selections in the Leather/SM/Fetish press. All such quotations should be credited to **FIRST LINK**.

NATIONAL



CALENDAR

FEBRUARY, 1989

- 16 SO-BAY LTHR/UNIF GRP SAN JOSE
Bar Social
- 17 CONSTANTINES S.F.
19th Mix/Match Party S.F.Eagle
- * 17 KNIGHTS D'ORLEANS NEW ORLEANS
Club Night Phoenix
- 17 PEP:ALBUQUERQUE ALBUQUERQUE
Women Only Potluck/Party
- * 17 OUTCASTS S.F.
Program/Hypnosis 8PM
- 17-19 BLACK GUARD MINNEAPOLIS
Black Frost '89
- 18 BARBARY COASTERS S.F.
23rd Anu MC Awards Calif.Club
- 18 PEP:ALBUQUERQUE ALBUQUERQUE
Party:C/B Torture
- 19 NLA:BC VANCOUVER,BC
Board Retreat 2PM
- * 19 FIFTEEN S.F.
9th Anniv.
- 19 SO-BAY LTHR/UNIF GRP SAN JOSE.
Meeting
- 19 GOLDEN GATE GUARDS S.F.
MC Award Vic.Brunch Galleon
- 20 VASM VANCOUVER,BC
Fuction 7:30 PM GLC
- 21 PEP:WASH.D.C. WASH,DC
Social
- 22 GMSMA N.Y.C.
Quiz:S/M.I.Q. Center
- 22 PEP:WASH.D.C. WASH,DC
Women's Group Mtng.
- 22 LINKS S.F.
Coordinators' Mtng
- 23 SO-BAY LTHR/UNIF GRP SAN JOSE.
Bar Social
- 23 PEP:ALBUQUERQUE ALBUQUERQUE
Male/Female-SM Rap Group
- 23 SOC.OF JANUS S.F.
Program Meeting
- 23 PEP:WASH.D.C. WASH,DC
Rap Session--Switching
- 24 VASM VANCOUVER,BC
Pub Night-Uniforms Ms.T's
- * 24 INT.MS.LEATHER S.F.
Physique Erotique
- 25 RURALS MC ROERMOND
Club Night Sjinderhannes
- 25 VASM VANCOUVER,BC
Demo Night
- 25 PEP:ALBUQUERQUE ALBUQUERQUE
Party:Show n'Tell Toys
- 26 VASM VANCOUVER,BC
Board Meeting
- 26 Puget Sound Mr.Leather Seattle
Pug.Sd.Boy Contest Off Ramp
- 26 Leather Daddy/Boy's JAN JOSE
Contest Club St.John.

- 27 VASM VANCOUVER,BC
Mens' SM Support Group GLC
- 27 PEP:WASH.D.C. WASH,DC
Business Mtng
- 28 PEP:WASH.D.C. WASH,DC
Lit Night
- **MARCH, 1989**
- 2 SO.BAY LTHR/UNIF GRP SAN JOSE
Bar Social, 8 PM
- 3-5 SOMANDROS L.A.
Desert Captive Run Michaels
Palm Springs
- 4 NLA:BC VANCOUVER,BC
Workshop:Role Playing GLCC
- 4 MENAMORE WILMINGTON,NC
Genl.Mtg. Palladium/Hunt Club
- 4 T-BOLTS HARTFORD,CT
New Officer Inst.Party Brook
- 4 GMSMA N.Y.C.
Member Only Dungeon Paddles
- 4 CLUB DOMENTIA S.F.
Women's Play Party
- 8 GMSMA N.Y.C.
Flog/Whip Demos Paddles
- 8 DREIZEHN BOSTON
Shaving
- 9 SO.BAY LTHR/UNIF GRP SAN JOSE
Bar Social, 8 PM
- 9 SOCIETY OF JANUS S.F.
Prog.Mtng, 8 PM
- 10 GMSMA N.Y.C.
Workshop:Spank/Flog
- 11 LINKS S.F.
Program/Party S.F.
- * 12 OUTCASTS S.F.
Steering Comm.
- 15 GMSMA N.Y.C.
Board Meeting
- 15 LINKS S.F.
Coordinator's Mtng
- 16 SO.BAY LTHR/UNIF GRP SAN JOSE
Bar Social, 8 PM
- * 17 KNIGHTS D'ORLEANS NEW ORLEANS
Club Night Phoenix
- * 17 OUTCASTS S.F.
Program Meeting
- 17-19 CONDUCTORS L/L NASHVILLE,TN
7th Anniv. TRACK VII
- 18 FIFTEEN S.F.
Whip/Flog Night
- * 18 NLA:WASHINGTON SEATTLE
IMSL Regional Sendoff
- * 19 FIFTEEN S.F.
Business Mtng
- * 19 SO.BAY LTHR/UNIF GRP SAN JOSE
Meeting
- 22 GMSMA N.Y.C.
S/M Erotic Art Center

- 23 SO.BAY LTHR/UNIF GRP SAN JOSE
Bar Social, 8 PM
- * 23 Alan Selby's Fantasy/ S.F.
Fetish Night End Up
- 23 Society of Janus S.F.
Program Meeting
- * 23-26 INTL.MS.LEATHER S.F.
I.M.S.L.Weekend
- * 24 INTL.MS.LEATHER S.F.
Black Elegance Ball S.Franciscan
- 24-27 CFLM VIENNA,AUST
Ostern 1989
- * 25 INTL.MS.LEATHER S.F.
Intl.Ms.Leather Contest
- 25 DESERT LEATHERMEN TUCSON,AZ
Observer/Comm.Benefit
- 25 SLUTS FOR SENSATION S.F.
Party
- 30 SO.BAY LTHR/UNIF GRP SAN JOSE
Bar Social, 8 PM
- 31 VASM VANCOUVER,BC
Bar Night Ms.T's
- 31 NLA:WASHINGTON SEATTLE
Couples Dinner/Party
- **APRIL, 1989**
- 1 VASM VANCOUVER,BC
Demo Night
- 1 T-BOLTS HARTFORD,CT
Bar Night/AIDS Buft Brook,Wstprt
- 2 NLA:WASHINGTON SEATTLE
Rocky Horror Picture
Show Party
- 2 VASM VANCOUVER,BC
Board Meeting
- 12 GMSMA N.Y.C.
Meeting:Shaving Paddles
- 12 DREIZEHN BOSTON
Piercing
- 14 GMSMA N.Y.C.
Workshop:Shaving
- 15 FIFTEEN S.F.
W.Coast Lower Education
- * 16 OUTCASTS S.F.
Steering Comm.
- 19 GMSMA N.Y.C.
Board Meeting
- * 21 KNIGHTS D'ORLEANS NEW ORLEANS
Club Night Phoenix
- * 21 OUTCASTS S.F.
Program Meeting
- 21-23 TEJANS MC/RIVER SAN ANTONIO
CITY OUTLAWS
Alamo Run '89
- * 26 GMSMA N.Y.C.
Meeting/Uniforms Center
- 28 VASM VANCOUVER,BC
Bar Night Ms.T's

- 28-30 NLA:WASHINGTON SEATTLE
May Day III/Mr.& Ms.
NLA Contest
- 28-30 NLA SEATTLE
N.A.C. Meetings
- 29 VASM VANCOUVER,BC
Demo Night
- 29 GMSMA N.Y.C.
Dungeon Demo Paddles
- 29-30 CONSTANTINES S.F.
500 Mile Run
- 30 VASM VANCOUVER,BC
Board Meeting
- **MAY, 1989**
- 5-7 SATYRICON M.C. LOS VEGAS,NV
8th Anniv.Run
- 6 T-BOLTS HARTFORD,CT
Bar Night/Aids Buft Brook,Wstprt
- 10 GMSMA N.Y.C.
Meeting:SM & the Law Center
- 10 DREIZEHN BOSTON
Working with Wax
- 12 GMSMA N.Y.C.
Workshop:Basic Bondage
- 14 GMSMA N.Y.C.
Blacksmith Tour
- * 14 OUTCASTS S.F.
Steering Comm.
- 17 GMSMA N.Y.C.
Board Meeting
- * 19 OUTCASTS S.F.
Program Meeting
- * 19 KNIGHTS D'ORLEANS NEW ORLEANS
Club Night Phoenix
- 20 NLA:WASHINGTON SEATTLE
IML Regional Sendoff
- * 20 FIFTEEN S.F.
Military Night
- * 24 GMSMA N.Y.C.
Meeting:Pain/Power/ Center
Limits
- 26 VASM VANCOUVER,BC
Bar Night Ms.T's
- 27 VASM VANCOUVER,BC
Demo Night
- 28 VASM VANCOUVER,BC
Board Meeting
- **JUNE, 1989**
- 9-11 TWO WHEELERS OF OMAHA,NB
5th Anniversary
- 9-10 T-BOLTS HARTFORD,CT
Run 18/Cruise/Party
- 10-11 THUNDERBOLTS WESTPORT,CT
Cruising with the T-Bolts
CT River Cruise
- * 11 OUTCASTS S.F.
Steering Comm.

- 14 GMSMA N.Y.C.
Elections Center
- 14 DREIZEHN BOSTON
Who We Are/What We Do
- * 16 OUTCASTS S.F.
Program Meeting
- * 16 KNIGHTS D'ORLEANS NEW ORLEANS
Club Night Phoenix
- * 17 FIFTEEN S.F.
Corp.Punshmt.Nite
- * 18 NLA:WASHINGTON SEATTLE
Pride Festival
- 18 GMSMA N.Y.C.
Pride Night
- 21 GMSMA N.Y.C.
Board Dinner
- 23 VASM VANCOUVER,BC
Bar Night Ms.T's
- 24 NLA:WASHINGTON SEATTLE
Pride Party
- 24 VASM VANCOUVER,BC
Demo Night
- 25 NLA:WASHINGTON SEATTLE
Pride Parade
- 25 VASM VANCOUVER,BC
Board Meeting
- 28 GMSMA N.Y.C.
Meeting:Bondage Paddles
- **JULY, 1989**
- 8 GMSMA N.Y.C.
Picnic Hauska Hse
- 12 DREIZEHN BOSTON
Enemas
- * 15 FIFTEEN S.F.
Bondage Night
- * 16 NLA:WASHINGTON SEATTLE
Auction
- * 16 OUTCASTS S.F.
Steering Comm.
- 18-20 GMSMA N.Y.C.
Board Retreat
- * 21 KNIGHTS D'ORLEANS NEW ORLEANS
Club Night Phoenix
- * 21 OUTCASTS S.F.
Program Meeting
- 21 VASM VANCOUVER,BC
Bar Night Ms.T's
- 22 Mr.B.C.Drummer Contest VANC.,BC
8 PM Ms.T's
- 23 VASM VANCOUVER,BC
Board Meeting
- 28-31 NLA:BC VANCOUVER
Pride Weekend/Mr.& Ms.
Vancouver Leather Contest
- **AUGUST**
- 9 DREIZEHN BOSTON
Mummification

- 13 OUTCASTS S.F.
Steering Comm.
- * 18 OUTCASTS S.F.
Program Meeting
- * 18 KNIGHTS D'ORLEANS NEW ORLEANS
Club Night Phoenix
- 18-20 CONSTANTINES S.F.
Weekend Run
- * 19 FIFTEEN S.F.
Spanking Night
- 19 NLA:WASHINGTON SEATTLE
All-City Picnic
- 25 VASM VANCOUVER,BC
Bar Night Ms.T's
- 26 VASM VANCOUVER,BC
Demo Night
- 27 VASM VANCOUVER,BC
Board Meeting
- **SEPTEMBER**
- 1-4 CORPUS CHRISTI M.C. CORPUS CHR,TX
Beachhead IV
- * 10 OUTCASTS S.F.
Steering Comm.
- 13 DREIZEHN BOSTON
Inferno Report
- * 15 KNIGHTS D'ORLEANS NEW ORLEANS
Club Night Phoenix
- * 15 OUTCASTS S.F.
Program Meeting
- 16 T-BOLTS HARTFORD,CT
Bar Night Bike Stop,Phil.
- * 16 FIFTEEN S.F.
Branding
- * 22-25 LION REGIMENT BOISE,ID
Mining the Gem Run Silver City
- 22 VASM VANCOUVER,BC
Bar Night Ms.T's
- 23 VASM VANCOUVER,BC
Demo Night
- 24 VASM VANCOUVER,BC
Board Meeting
- **OCTOBER**
- * 6-8 KNIGHTS D'ORLEANS NEW ORLEANS
Anniv.15
- 6-8 DESERT LEATHERMEN TUCSON,AZ
Mystery Run/Anniversary
- 6-9 NLA SEATTLE
Living in Leather IV
- 11 DREIZEHN BOSTON
Suturing
- * 15 OUTCASTS S.F.
Steering Comm.
- * 20 KNIGHTS D'ORLEANS NEW ORLEANS
Club Night Phoenix
- * 20 OUTCASTS S.F.
Program Meeting

MR. & MS. GAY CANADA

On Jan. 21, the Dogwood Monarchist Society Mother Court of Canada sponsored the first Mr. & Ms. Gay Canada Pageant. Courts from Toronto, Calgary, Edmonton, and Vancouver joined in the festivities. Elaborately staged productions by the Seattle, Toronto, and Portland Courts were the highlight of the evening's entertainment, along with Just Us, West End Transfer and Mr. and Miss Gay Vancouver.

Contestants paraded, did a five-minute entertainment piece and an introduction on the microphone, all of which were judged by a panel of judges including heterosexuals from television and fashion, along with Mr. Northwest Drummer, Rob Neyts.

After the scores were counted, the winner of Ms. Gay Canada was Mauren Colby of Vancouver and the first Mr. Gay Canada was Mr. Vancouver Leather, Dean Ryane, a member of NLA:B.C. and VASM.

LIVING IN LEATHER V

The Site for *Living in Leather V* must be chosen fairly soon. If you are interested in hosting the Conference in your area, please let us know; the enormous amount of planning and lead-in time required to put on these Conferences means that some work needs to begin soon. Basic requirements for a Conference: a location (some place with meeting areas, accommodations, possibly party and play space in the vicinity), people (members to organize, people to do the 10,000 jobs to build and execute a Conference), time (the hours and days and months of preparatory work are no light commitment for anyone), energy (none of the tasks are light) and enthusiasm.

INTERNATIONAL MS LEATHER

The upcoming IMSL weekend (March 23-25, 1989) promises to be the biggest and best yet. Events open with a beer/soda bust on March 24 at Navigator Travel, with proceeds going to the Sashi Hyatt Travel fund. Judy Talling and Shan Carr are both scheduled to speak. At 9 PM on the 24th, the annual Black Elegance ball will occur at the San Franciscan Hotel. On the 25th, the next International Ms Leather will be chosen, at the San Franciscan. The names of the judges of this year's contest will be familiar to readers: Shan Carr, Madeleine Davis, Ilene Dodd, Dragon, Shannon Kennedy, Cynthia Slater, and Pat Yancey-Jones. An extraordinary group of contestants suggest that this year's contest will be a hot one!

KNIGHTS D'ORLEANS

The Knights D'Orleans announces a new home bar, the Phoenix, in New Orleans. Their monthly club nights are scheduled there every third Friday. Their schedule has been particularly busy and, even as we write this, the Knights are off on their usual boisterous Carnival rounds!

NATIONAL LEATHER ASSOCIATION: SAN DIEGO

We take great pride in announcing a new NLA chapter in formation, National Leather Association: San Diego. Ed. W. is currently our liaison with this group; he may be contacted for information at 4081 Alagama, San Diego, CA, 92104. We hear that 18 people are already signed up for this, the fourth chapter of the NLA. We expect great things from this chapter.

NLA:B.C.

NLA:B.C. has just announced its Board of Directors: Co-Chairs are Jan and Dor; Secretary is Myrna, Treasurer is Larry, and Ryan and Hody are Co-Co-Ordinators. Congratulations, and keep up the good work.

NLA:B.C. announces a monthly bar night, every second Friday, at Ms. T's, 339 W. Pender St., Vancouver, B.C. Be sure to stop by and enjoy the festivities!

A hot program is on the agenda for March, a Role-Playing discussion on March 4 at the Gay & Lesbian Community Centre, 1170 Bute St., at 7 PM.

In April, look forward to the SRBSOS (or Springtime Rut N' Strut Blacktie Soiree and Community Social). More details should follow next month.

NLA:B.C. is gathering their forces for a busy, exciting year. The late Mack Mackinnon was a dynamic community leader, but the hearty group in B.C. are working together to continue his great ideas and projects.

ADVERTISING IN THE FIRST LINK

FIRST LINK is pleased to announce, for the first time, advertising rates. For 1 1/2 x 11 page, the cost is \$75 for commercial ads, \$50 for Non-Profit groups. For full-page (8 1/2 x 11) ads only, if YOU do the printing and send us 750 copies of the finished piece, we will charge 75 % of the above amounts.

Half pages cost \$50 for commercial ads, \$30 for non-profit groups. Quarter pages cost \$35 for commercial ads, \$20 for non-profit.

All of the above rates are per insertion ones. We offer a package deal for business-card-size ads. For commercial cards these run \$20 for one insertion, or \$50 for three consecutive months. Non-profit groups pay \$13 per insertion, or \$30 for three months.

NLA Affiliates are entitled to a further 10% discount. This might be a good time to consider affiliating with NLA.

All ads accepted must be CAMERA READY. We do NOT provide screening, layout, or type-setting services. Remember that the FIRST LINK reaches a large number of Leather/SM/Fetish individuals and groups each month.

Classified ads are now available. Send \$5 for the first 20 words, \$.25 for each additional word. We do not forward mail, and we do not accept sexual solicitations.

Send your ad with your check or money order, payable to National Leather Association, to FIRST LINK, NLA, POB 17463, Seattle, WA 98107.

Advertising space will be available (at different rates from those given above) in our Living in Leather IV Conference Program. Details will be available at a later date.

SEATTLE CHAPTER NAME REVISION

In response to the need to make the Seattle regional chapter more representative of the geographic region it represents, a name-change by-law alteration is being prepared by the Seattle Board.

Our recent independent state incorporation listed us as NLA: WASHINGTON. However, we are free to choose an alternate operating name. Suggested names, other than NLA: WASHINGTON, include NLA: PUGET SOUND, NLA: WESTERN WASHINGTON, and NLA: CASCADE. Some members may see no need to change from NLA: SEATTLE.

Members are invited to submit suggestions (post cards are encouraged) to the Board for the March Meeting. Send all comments and suggestions to NLA: SEATTLE, P.O. Box 20674, Seattle, WA, 98102.

SHELLX

Shellx notes an increase in censorship and "right-wing" backlash in Massachusetts. The target, this time, was *Womonyre Books* in Northampton, and publications including works by Oak Grove, Kotz, Califia, and Nestle and periodicals including *Outrageous Women*, *On Our Backs*, and *Bad Attitudes*. The bookstore is being forced to close after 11 years.

Shellx continues its program activities with important information on safe sex for lesbians.

NLA: PORTLAND

By the time this reaches you, NLA: Portland will have just hosted their Leather Heart Party (Feb. 11 at the Dirty Duck). While we cannot know, we are sure as we write this that it will have been a gala occasion—given the fantastic energies and enthusiasms of the NLA: Portland members.

At the recent Ms. Oregon Leather contest, by the way, the person chosen to be the new Ms. Oregon Leather was none other than the Secretary of NLA: Portland, Suzie S. Congratulations from the staff of the FIRST LINK—the I.M.S.L. will certainly be a tough one!

LION REGIMENT

The Lion Regiment, of Boise Idaho, has announced their "Stomp-About" in Silver City, Idaho, for Sept. 22 to 25, 1989. This sounds like a gusty, delightful weekend, complete with accommodations in a Victorian Hotel. For information and application forms, contact Lion Regiment, c/o BoisLine, P.O. Box 8182, Boise, ID 83707.

Lion Regiment also offers a new fundraising project, a set of up-to-date mailing labels for U.S. and International Clubs, for \$15. Contact at address above.

THE FIFTEEN

Congratulations to The 15 Association of San Francisco, an NLA affiliate, for their Anniversary IX. The weekend of February 18/19 promises a wide array of bike club events, parties, and other festivities.

Also, The 15 is producing several rather sophisticated videos. Write to them at P.O. Box 421302, San Francisco, CA, 94142, for information.

C-C-C-Gold! Our Magnificent, Mild, Marine temperate Northwest has become Snowy, Slippery, & Simply Sneezy (and that's not even slightly fun).

I'm greatly looking forward to this weekend and a visit to Portland for the first Official NLA: Portland function, "Leather Hearts." I've always felt the "Dirty Duck" could be a good leather bar and now there'll be a chance to find out. Chapter No. 3 up and running. Must mention that NLA: Portland Secretary Susie Shepherd was chosen 1989 Ms. Oregon State Leatherwoman. Congratulations and best of luck at IMSL. Our organization has so many incredible Dykes.

Scribbles

And speaking of Chapters, it's great to welcome San Diego as a Chapter in Formation (Number 4). I admit that 2 1/2 years ago we never dreamed of our organization's being anything but a local group—not with 3 other Chapters from Vancouver B.C. to Southern California.

Those attending Black Hearts at the 24th St. Tavern; in Tacoma had a most pleasant evening. Well done to Rick O. & Jeff H., and several others, for providing a smoothly run, loosely structured, & fun event. I was pleased to meet several people attending their first NLA event, and enjoying themselves. Prizes were given for Best Costume and

Least Yet Legal Costume. Although the weather definitely was not co-operative, those who made the effort were rewarded.

It was a pleasure to tour the facilities to be used for the Kinky Kouples Night, March 31st. Comfortable lounge areas, 2 1/2 hot tubs (1 indoor, 1 outdoor, and a small one by the pool), numerous small play spaces, a video area, and a large pool should all combine for a very successful event. A special workshop for novices, technical demos, and supervision by Seattle Dungeon Guild point to a safe, sane, and very interesting evening. Throw in a chicken dinner for \$35.00 a couple. sounds like a Deal!

MENAMORE LEVI-LEATHER CLUB

A new L/L Club has just formed in Wilmington, North Carolina, the MENAMORE Levi/Leather Club. They are open to men and women interested in the Levi/Leather lifestyle. Their goals include the provision of support, information, and education for individuals, the function of a contact group, and networking with like-minded organizations. They may be reached at P.O. Box 7364, Wilmington, NC, 28406.

BUTCH FASHION SHOW

Sponsored by the Outcasts as a fundraiser for their candidate for International Ms. Leather, a BUTCH FASHION SHOW will be held March 5 at Amelia's in San Francisco. Doors open at 6:30 with show at 8:00. Dancing before and after the show. Price is \$5.00.

ADDRESS CHANGES

Please keep us informed if you are moving or have moved; we have a big mailing list to keep up to date, and it costs the NLA money every time you move without telling us. We mail FIRST LINK at \$.167 a copy. If your LINK is returned with an address correction, it costs us 25 cents to receive it, and another quarter to mail it again. One new member (added to our lists on Christmas Day) has moved 4 times so far...at a net cost to the NLA of \$4.25 for the first issue (and \$.667 for another issue), this member has yet to receive an issue.

N.L.A. AND THE PRESS

This month brought several appearances of the NLA in the National Press. The Society of Janus (San Francisco) in their publication *GROWING PAINS* included a long and thoughtful review of workshops and demonstrations from *Living in Leather III*, written by Karen M. *The Journal of Sexual Liberty*, issued by the Committee to Preserve our Sexual and Civil Liberties, includes (without comment) our newly-adopted Statement of Purpose.

CLASSIFIED ADS:

Classified ads cost \$5.00 for the first 25 words, \$.25 for each additional word. Make checks payable to National Leather Association, POB 17463, Seattle, WA, 98107. We do not provide forwarding service. Sexual solicitations are not accepted.



FOR RENT—Roommate wanted, or rent entire 2 bedroom, 2 bath Lake Sammamish Condo. Full amenities—dock, fireplace, sauna, jacuzzi, etc. 206-881-0684.

KINKY WOMAN in Seattle has room to rent in Ballard. Rent of \$250/mo. includes utilities, & is available on Jan. 20. Please call Jan—(206)-784-9572.

HELP WANTED—First Link takes time and energy. Each month, we have to assemble printed issues and get them ready for bulk mailing. If you can help at one of these "mailing parties," drop us a note at POB 17463, Seattle, WA, 98107.