

April 2006

# The Link

News from NLA-International

April 18, 2006

P O Box 423  
Blacklick OH 43004 0423

## In The Link

\* Tribal Fire - AGM

\* Upcoming Events

\* Financial Report

\* NLA Addresses

\* Contact Information

\* May Election

\* Membership Drive

### Note from the Prez

Looking forward to seeing you May 5-7 at OKC's Tribal Fire, where we will be having NLA events all weekend. This is a great place to mingle with old friends and make new friends. And I promise you that OKC is very friendly!

We'll be kicking off our 2006 Membership Drive at Tribal Fire.

Also, get ready for our election in May, and NLA Dallas's Beyond Vanilla event, which is September 29<sup>th</sup> through October 1, 2006.

**Beyond Vanilla**  
**Dallas, Texas**  
**9/29 - 10/01/06**

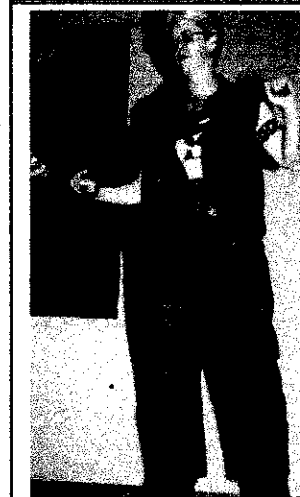


Photo by George Nelson

### In memory of Jan Lyon

Jan Lyon passed away recently. She had been ill with fibromyalgia for many years, lost a leg, and then developed kidney problems that were not very treatable. True to her courageous nature, Jan opted to receive hospice care and the aid of friends and family, and die with honor. We are saddened to lose this handsome leatherdyke who was so passionate about NLA.

*Photo from May Day Event, 1989*

**Tribal Fire**  
**May 5 – 7, 2006 – Oklahoma City, OK**

<http://www.tribalfireokc.com>

\* NLA-I members receive a \$10 discount.

**Weekend Package Includes**

- \* 40+ Workshops and Intense Sessions
- \* Meet and Greet
- \* **Regional Mr/Ms Olympus Contest**
- \* 10 World Class Vendors
- \* Fetish Gala & Door Prizes
- \* Fabulous Fantasies
- \* Leather Boy/Girl Gathering
- \* Cigar Smoker
- \* Run Pin
- \* 2 Play Parties
- \* Tribal Soul Dance ®

**Upcoming Events**

Beat Me in St. Louis

April 21 - 23

<http://www.STL3.com/events>

Registrations must be postmarked by April 10th.  
 Play, presenters, NCSF benefit, vendors

May 25 – 29 in Chicago

International Mr Bootblack Contest

May 26 – 31 in Chicago

International Mr Leather

[www.imrl.com](http://www.imrl.com)

Bear Pride in Chicago

[www.bearpride.org](http://www.bearpride.org)

June 9 – 11 in Atlanta

Southeast Leather Fest

[www.seleatherfest.com](http://www.seleatherfest.com)

June 18 – New York City

Folsom Street East

[www.folsomstreeteast.org](http://www.folsomstreeteast.org)

New Jersey June 30-July 3rd

TES FEST 06

Four days with your New York hosts, The Eulenspiegel Society, as they whoop it up for a 35th anniversary celebration in central New

Jersey's Expo Center, featuring 150 workshops and social events; top vendors; and a 20,000 sq ft dungeon with 24-hour access. Check it out at <http://www.TESFest.org> ; [promotion@tesfest.org](mailto:promotion@tesfest.org)

Master-slave conference

Washington, DC

July 21 -23, 2006

Keynote speaker, Guy Baldwin. Workshops, contests, Vi Johnson's library, vendors, parties, slave auction.

<http://www.masterslaveconference.org/>

[producer@masterslaveconference.org](mailto:producer@masterslaveconference.org)

**Central Florida Invites Us to Two Major Events**

The Central Florida chapter just confirmed plans to be part of two major Florida events:

- 1) Orlando Bash: <http://www.orlandobash.com/>  
and
- 2) FetishCon: <http://www.fetishcon.com/>

The chapter will be "getting their hands dirty" in the direct work of the event as platform/workshop presenters, as well as having an outreach table in the vendor area. The chapter invites all NLA members from around the country to come. Both these events are very popular and well-attended by the pansexual communities (state-wide, regionally, and nationally), so this is a terrific opportunity for NLA. The NLA message is resonating strongly in the Tampa area. For more information, please contact **Daddy Bob** (NLA-CFL), [NorthEastGuys@aol.com](mailto:NorthEastGuys@aol.com)



**The Good, Bad, and the Ugly**

Write us with your stories about BDSM do's and don't's! Pass on your experience, and we'll print it in the *Link*. Write to us at [jhall36@columbus.rr.com](mailto:jhall36@columbus.rr.com) with the subject line: for Link .

**Beyond Vanilla**  
**Dallas, Texas: 9/29 – 10/01/06**

Mark your calendars! Beyond Vanilla XVI will be Sept. 29<sup>th</sup> thru Oct. 1<sup>st</sup>.

Ladyshivers reports that some parts of the Beyond Vanilla XVI website are up and running in preparation for this 2006 event. If you are a vendor who would like to be considered for vending at BVXVI, the application page is now online. Visit [www.beyondvanilla.org](http://www.beyondvanilla.org) and click the vending tab.

Please copy and paste the information into email and send to: [bv16vending@yahoo.com](mailto:bv16vending@yahoo.com)

**March 31, 2006 Financial Report**

	Starting Balance	Change	Ending Balance
Accounts:			
LIL	224.37		224.37
Travel	150.21		150.21
Dom Violence	1,805.36		1,805.36
General Operating	3,925.32		
Income:			
Dues		350.00	
Expenses:			
PayPal Fees		1.76	
Net Income/Loss		348.24	4,273.56
Total	6,105.26	348.24	6,453.50



CELEBRATE

goLEATHER's 1<sup>ST</sup> ANNIVERSARY

Polish these boots, strap on your chaps and join a band of other invaders for our



Sunday, APRIL 30<sup>TH</sup> at 6pm, \$15

Dinner to follow on Linea in Road

Come Out & Wear your Gear!

CONTACT: [DIRPUP@COMCAST.NET](mailto:DIRPUP@COMCAST.NET)

[LEATHERINVASION.COM](http://LEATHERINVASION.COM)

[GOLEATHER.ORG](http://GOLEATHER.ORG)

Florida's Leather Invasion and goLEATHER invite you to join them at 6 pm at the World Erotic Art Museum. This social event celebrates the first anniversary of the group goLEATHER. To learn more about this event, they can be reached at [dirpup@comcast.net](mailto:dirpup@comcast.net) . Our own **Josh Johnson** of NLA South Florida is part of LEATHER. The World Erotic Art Museum of Art private collection "swings" from classical to kitsch. Muesum goers will find 4,000 objects and antiquities dating back to 200 B.C. and modern, pop-culture fare. Admission is \$15 per person. For more information about the museum, check out [www.weam.com](http://www.weam.com) or call (305) 532-9336; the museum address is 1205 Washington Ave, Miami Beach, Fl 33139



On the lighter side...

You know you're a pain pig when...

- you need both hands to open one of your nipple clamps
- your mountain climbing life-line is fed through your PA
- you misinterpreted the help-wanted ad for a paddleboat tester
- you fancy bungee-jumping by your testicles
- the lights dim during your electrical scene
- your chapter ties a bowling ball around each of your testicles, throws you down the alley, and you make the 7-10 split

*submitted (naturally) by Gino, NLAC*

## What's On YNOT Internet Radio?

Thursday, April 6  
2:00pm PST/5:00pm EST  
YNOTRadio.com

TOPIC: Pro dommes

GUESTS:

Eve Minax, Chicago domina & performer -  
[www.mistressminax.com](http://www.mistressminax.com)

Betka Schpitz, Portland domina & fetish model -  
<http://www.betkaschpitz.com>

Log on. Listen. Join in the chat room conversation.

Re-broadcast on Wednesdays at 9am PST,

Saturdays &

Sundays at 10pm PST.

UPCOMING SHOWS:

4-13-06 = Barbara Nitke, Susan Wright, Attorney

Jeffrey Douglas

4-20-06 = Jack Rinella

4-27-06 = Rupert Huse

## The Chapters

### NLA-International

P O Box 423  
Blacklick OH 43004-0423

### NLA-Central Florida

Tampa FL  
<http://nla-cfl.com/>  
[northeastguys@aol.com](mailto:northeastguys@aol.com)

### NLA-Columbus

P O Box 2763  
Columbus OH 43216  
<http://www.nlacolumbus.com>  
[nlacolumbus@nlacolumbus.com](mailto:nlacolumbus@nlacolumbus.com)

### NLA-Dallas

P O Box 190432  
Dallas TX 75219-0432  
<http://www.nla-dallas.com>  
[nladallas@hotmail.com](mailto:nladallas@hotmail.com)

### NLA-Edmonton

Meadowlark RPO *Box 1010*  
P O Box ~~67027~~ *10301-104 St, NW*  
254 Meadowlark Health Centre  
Edmonton AB Canada ~~T5R 5Y3~~ *T5J 1B9*  
<http://www.bikinicop.com/>

[nlae@telusplanet.net](mailto:nlae@telusplanet.net)

### NLA-Indianapolis

PO Box 1466  
Greenwood, IN  
46142  
<http://nla-indianapolis.org>  
[info@nla-indianapolis.org](mailto:info@nla-indianapolis.org)

### NLA-New England

New England Leather Alliance (NELA)  
P.O. Box 35728  
Brighton, MA 02135-0013  
<http://www.nla-newengland.org>

### NLA-Oklahoma City

P.O. Box 12095  
Oklahoma City, OK 73157-2095  
<http://www.colight.com/nla-okc/>

Chapter-in-formation

St. Louis

Tyger [wolfknight26@hotmail.com](mailto:wolfknight26@hotmail.com)

## Do It in Public

NLA is seeking a publicist. Have a good time telling people about how nice we are and what neat things we're doing. Apply to Jan at [jhall36@columbus.rr.com](mailto:jhall36@columbus.rr.com) with the subject: Publicist.

## May Election Seeks Your Choices

Be on the lookout for an invitation to participate in the upcoming May election. We're certain you will want to participate, because the ballot includes selecting a new president of NLA. **Not a small detail!**

## Membership Drive Kicks Off at Tribal Fire; "300 Or Bust!"

Our 2006 Membership Drive kicks off at Tribal Fire, where we'll be having an information table about how nice and charming we are! Interested folks can sign up on the spot. We currently have about 230 members, and our goal is 300 by the end of 2006. In January 2007, the board will be honoring those members who achieve excellence in the membership recruitment area.

Contact us!

NLA HOTLINE

1-780-454-1992

President	interim, Jan Hall	<a href="mailto:jhall36@columbus.rr.com">Jhall36@columbus.rr.com</a>
Vice President	Bill Reed	<a href="mailto:bigbill01@yahoo.com">bigbill01@yahoo.com</a>
Wisdom Keeper	Rafe	<a href="mailto:rd43119@yahoo.com">rd43119@yahoo.com</a>
Secretary	Kate	<a href="mailto:katencolumbus@aol.com">katencolumbus@aol.com</a>
Treasurer	Owen	<a href="mailto:nla.owen@sbcglobal.net">nla.owen@sbcglobal.net</a>
Member At Large	Jess	<a href="mailto:subjess01@aol.com">subjess01@aol.com</a>
Member At Large	Kathleen	<a href="mailto:rubyfinch@hotmail.com">rubyfinch@hotmail.com</a>
Budget & Finance Chair	Dusty	<a href="mailto:niteraven38@yahoo.com">niteraven38@yahoo.com</a>
<b>Chapter Representatives</b>		
Columbus	Owen	<a href="mailto:oeckert@sbcglobal.net">oeckert@sbcglobal.net</a>
Central Florida	Bob	<a href="mailto:northeastguys@aol.com">northeastguys@aol.com</a>
Dallas	interim, Sir Dallas	<a href="mailto:avaughn@ajasper.com">avaughn@ajasper.com</a>
Edmonton	Merlyn	<a href="mailto:Merlyn@interbaun.com">Merlyn@interbaun.com</a>
Indianapolis	Tammie	<a href="mailto:imsl03@yahoo.com">imsl03@yahoo.com</a>
NELA	Rae	<a href="mailto:rae@NELAonline.org">rae@NELAonline.org</a>
Oklahoma City	TJ	<a href="mailto:ODB94@hotmail.com">ODB94@hotmail.com</a>
Philadelphia	Caro	<a href="mailto:LadyCarol@aol.com">LadyCarol@aol.com</a>
South Florida	interim, Josh	<a href="mailto:kshsradio@aol.com">kshsradio@aol.com</a>
Link nla	interim, Jan & Owen	<b>see above</b>
Membership Chair	Merlyn	<a href="mailto:Merlyn@interbaun.com">Merlyn@interbaun.com</a>
Chapter Outreach	Joel	<a href="mailto:floridaredfur@aol.com">floridaredfur@aol.com</a>
Achivist Memory Book, webgirl	Seraphina	<a href="mailto:seraphina@unvanilla.org">seraphina@unvanilla.org</a>
Policy & Procedures	Sallee	<a href="mailto:mallard500@juno.com">mallard500@juno.com</a>
Bylaws		
Law	Kate	<b>see above</b>
Video History	Jan	<b>see above</b>
DV NLA-I (US)	joey	<a href="mailto:boydvprojectnla@aol.com">boydvprojectnla@aol.com</a>
<b>Chapter Chairs</b>		
Columbus	Shane Dawn	<a href="mailto:sunderbe@msn.com">sunderbe@msn.com</a> <a href="mailto:queerpen@core.com">queerpen@core.com</a>
Central Florida	Bob	<a href="mailto:northeastguys@aol.com">northeastguys@aol.com</a>
Dallas	Bob	<a href="mailto:TheClanKeltner@aol.com">TheClanKeltner@aol.com</a>
Edmonton	Merlyn	<a href="mailto:Merlyn@interbaun.com">Merlyn@interbaun.com</a>
Indy	Tammie	<a href="mailto:imsl03@yahoo.com">imsl03@yahoo.com</a>
NELA	Vivienne	<a href="mailto:Vivienne@nelaonline.org">Vivienne@nelaonline.org</a>
OKC	Michelle David	<a href="mailto:harley1f@aol.com">harley1f@aol.com</a> <a href="mailto:datatemp26@cox.net">datatemp26@cox.net</a>
Philly	Caro	<a href="mailto:LadyCarol@aol.com">LadyCarol@aol.com</a>
South Florida		